

方型重油油壓缸特性資料 Specification

| | | | | | | | |
|--|--|--------|---------|---------|----------|-----------|--------|
| 氣壓缸內徑 Bore sizes of cylinder(mm) | Ø40 | Ø50 | Ø63 | Ø80 | Ø100 | | |
| 缸管材質 Material of cylinder barrel | 鋼管 Carbon steel STKM-13C OR ST52/白鐵管 Stainless tubes SUS 304 | | | | | | |
| 使用壓力範圍 The range of pressure(MPa) | 0.3-14MPa(3-140kgf/cm ²) / 另有高壓可特殊訂製,請來電洽詢 | | | | | | |
| 使用溫度範圍 The range of temperature(c°) | NBR/PU{-25~+80°(C°)} / VITON{-10~+150°(C°)} | | | | | | |
| 使用速度範圍 The range of speed(mm/sec) | 8~300(mm/sec)/另有低摩擦高速油封選用(1000mm以上/sec),請來電洽詢 | | | | | | |
| 標準衝程活塞(PM)的長度,長衝程活塞與緊緊模式請參閱註1 | 40 | 40 | 45 | 45 | 50 | | |
| 各缸徑最大容許衝程 STROKE .mm Max.Permissible | 參閱有關軸心挫曲與缸體固定形式技術資料 | | | | | | |
| 衝程之容許公差/Tolerance of stroke | 衝程/STROKE | 100 以下 | 100~250 | 250~630 | 631~1000 | 1001~1600 | 1601以上 |
| JIS B 8354 B級/Refer to Right Table | 容許差/Tolerance | 0~+0.8 | 0~+1.0 | 0~+1.25 | 0~+1.4 | 0~+1.6 | 0~+1.8 |
| 活塞桿螺紋加工精度/Accuracy of Threading at Rod End | JIS 6g/6H(相當JIS 2級) | | | | | | |

FO-B-N-063-A-A-030-N-0150-N-N-AST000-N



| | | | | | | | |
|---|-------------------------------------|---|--|-------------------------------|------------------------------|------------------------------|-----|
| 1 | 型式 / TYPE | B: 標準型 B: Standard type | | D: 雙軸型 D: Double-Rod type | | | |
| 2 | 磁石/MAGNET | R: 內加磁石 N:沒有 R: with magnet inside N:No symbol | | | | | |
| 3 | 鋼管內徑/外徑 CYLINDER TUBES | Ø40/Ø48 | Ø50/Ø60 | Ø63/Ø73 | Ø80/Ø95 | Ø100/Ø114 | |
| | 不銹鋼缸徑/外徑 STAINLESS TUBES | Ø40/Ø46 | Ø50/Ø60 | Ø63/Ø73 | Ø80/Ø95 | Ø100/Ø114 | |
| 4 | 油封選用 SEAL SYMBOL 油封材質/Seal material | 適用作動油種類 Kind of Fluid | | | | | |
| | | 一般礦物性作動油 Pertroleum-Based fluid | 水乙二醇 Water-Glycol fluid | 磷酸酯油 Phosphate-Ester fluid | O/W作動油 Water in oil fluid | W/O作動油 Oil in Water fluid | |
| | | A PU Polyurethane rubber | ○ | × | × | △ | △ |
| | | B NBR Nitrile rubber | ○ | ○ | × | ○ | ○ |
| C VITON Fluoro elastomer | ○ | × | ○ | ○ | ○ | | |
| 備註: 允許使用○ 不允許使用× 請與我們洽詢△ Note: allowable○ unallowable× consult us△ | | | | | | | |
| 5 | 入油口位置填入 Port position | 前蓋端 Head | A:上(標準型)/B:右/C:下/D:左 A:UP(Standard)/B:Right/C:Down/D:Left | | | | |
| | | 後蓋端 Cap | A:上(標準型)/B:右/C:下/D:左 A:UP(Standard)/B:Right/C:Down/D:Left | | | | |
| 6 | 軸心/ROD | 標準 | Ø20 | Ø25 | Ø30 | Ø40 | Ø50 |
| | | 最大 | Ø25 | Ø35 | Ø40 | Ø50 | Ø70 |
| | | 緩衝軸心 | Ø20 | Ø25 | Ø35 | Ø40 | Ø50 |

| | | | | | | | |
|--|---------------------------------|--|--------------|---------------------|--|--------------|---------------------|
| 7 | 緩衝位置 Position of cushion | N: 無緩衝(標準型) / B:兩端緩衝 / X:前蓋緩衝 / Y:後蓋緩衝 N: No symbol / B:Double side cushion / X:Rod-cover side cushion / Y:Head-cover side cushion 緩衝型式請參閱說明2 | | | | | |
| 8 | 行程/STROKE | 填入需要之衝程 Max Permissible stroke | | | | | |
| 備註:標準品最大衝程,內徑Ø40~Ø100衝程為1499mm,長衝程訂製時,因考量活塞側向支撐力與緊緊柱子鎖固強度,另外因考量油壓缸固定形式與軸心撓曲度等等問題,需在計算強度或參閱技術資料或敬請與我們洽詢或參閱說明(1)(2) | | | | | | | |
| 9 | 缸體 固定方式 BORE ACCESSORY | 名稱 DESCRIPTION | 記號 SYMBOL | 略圖 CONFIGURATION | 名稱 DESCRIPTION | 記號 SYMBOL | 略圖 CONFIGURATION |
| | | 前蓋矩形法蘭 Rectangular flange at cylinder head | FA | | 後蓋矩形法蘭 Rectangular flange at cylinder cap | FB | |
| | | 前後端凸耳形 Foot mounting side end angles | LB | | U型搖擺座 U-shaped swing seat | TC | |
| | | 側端凸耳型 Foot mounting side luge | LA | | 前蓋端耳軸型 Trunnion mounting at cylinder head | TA | |
| | | 後蓋固定 單山型 Plaie clevis at cylinder cap | CA | | 後蓋可拆 雙山型 Clevis fork at cylinder cap | CB | |
| 備註:缸體固定如有其它方式可繪製圖面或與我們營業人員洽詢 Note: If the cylinder is fixed in other ways, you can draw a sketch or contact our sales staff | | | | | | | |
| 10 | 軸心 用配件 ROD ACCESSORY | 名稱 DESCRIPTION | 記號 SYMBOL | 略圖 CONFIGURATION | 名稱 DESCRIPTION | 記號 SYMBOL | 略圖 CONFIGURATION |
| | | Y型接頭 Rod Clevis | HY | | Y型接頭附 插銷 Rod Clevis With Pin | YP | |
| | | I型接頭 I Rod end mounting | HI | | 浮動接頭 Compensating Joint | KG | |
| | | 魚眼接頭 Oscillating Eye | PH | | T型接頭 T Rod end mounting | HT | |
| | | 焊接接頭 H Rod end mounting | HH | | 可調螺帽 Adjustable nut | AST | |
| 備註:軸心固定如有其它方式,可繪製草圖或與我們營業人員洽詢 Note: If the axis is fixed in other ways, you can draw a sketch or contact our sales staff | | | | | | | |
| 11 | 雙軸 可調行程 | 填入需要的可調行程 AST <input type="checkbox"/> <input type="checkbox"/> <input type="checkbox"/> mm 無記號:沒有 / NO Symbol Adjustable Stroke | | | | | |
| 12 | 近接開關 SENSOR SWITCH | 無記號:無裝置(標準型)/B:兩端近接開關/X:近接在前/Y:近接在後/T:近接*3/U:近接*4 N: No symbol/B:Double side sensor switch/X:Rod-cover side sensor switch/ Y: Cap-cover side sensor switch/T:sensor switch*3/U:sensor switch*4 | | | | | |

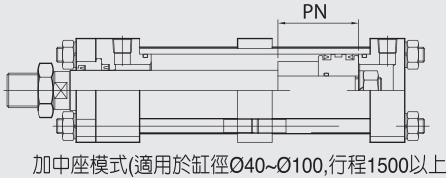


| | | | | | | | |
|--|-------------------------------------|---|--------------|---------------------|--|--------------|---------------------|
| 7 | 緩衝位置 Position of cushion | N: 無緩衝(標準型) / B: 兩端緩衝 / X: 前蓋緩衝 / Y: 後蓋緩衝 N: No symbol / B: Double side cushion / X: Rod-cover side cushion / Y: Head-cover side cushion 緩衝型式請參閱說明2 | | | | | |
| 8 | 行程/STROKE | 填入需要之衝程 Max Permissible stroke | | | | | |
| 備註: 標準品最大衝程, 內徑 $\phi 40 \sim \phi 100$ 衝程為1499mm, 長衝程訂製時, 因考量活塞側向支撐力與繫緊柱子鎖固強度, 另外因考量油壓缸固定形式與軸心撓曲度等等問題, 需在計算強度或參閱技術資料或敬請與我們洽詢或參閱說明(1)(2) | | | | | | | |
| 9 | 缸體 固定方式 BORE ACCESSORY | 名稱 DESCRIPTION | 記號 SYMBOL | 略圖 CONFIGURATION | 名稱 DESCRIPTION | 記號 SYMBOL | 略圖 CONFIGURATION |
| | | 前蓋矩形法蘭 Rectangular flange at cylinder head | FA | | 後蓋矩形法蘭 Rectangular flange at cylinder cap | FB | |
| | | 前後端凸耳形 Foot mounting side end angles | LB | | U型搖擺座 U-shaped swing seat | TC | |
| | | 側端凸耳型 Foot mounting side luge | LA | | 前蓋端耳軸型 Trunnion mounting at cylinder head | TA | |
| | | 後蓋固定 單山型 Plaie clevis at cylinder cap | CA | | 後蓋可拆 雙山型 Clevis fork at cylinder cap | CB | |
| 備註: 缸體固定如有其它方式可繪製圖面或與我們營業人員洽詢 Note: If the cylinder is fixed in other ways, you can draw a sketch or contact our sales staff | | | | | | | |
| 10 | 軸心 用配件 ROD ACCESSORY | 名稱 DESCRIPTION | 記號 SYMBOL | 略圖 CONFIGURATION | 名稱 DESCRIPTION | 記號 SYMBOL | 略圖 CONFIGURATION |
| | | Y型接頭 Rod Clevis | HY | | Y型接頭附 插銷 Rod Clevis With Pin | YP | |
| | | I型接頭 I Rod end mounting | HI | | 浮動接頭 Compensating Joint | KG | |
| | | 魚眼接頭 Oscillating Eye | PH | | T型接頭 T Rod end mounting | HT | |
| | | 焊接接頭 H Rod end mounting | HH | | 可調螺帽 Adjustable nut | AST | |
| 備註: 軸心固定如有其它方式, 可繪製草圖或與我們營業人員洽詢 Note: If the axis is fixed in other ways, you can draw a sketch or contact our sales staff | | | | | | | |
| 11 | 雙軸 可調行程 | 填入需要的可調行程 AST <input type="checkbox"/> <input type="checkbox"/> <input type="checkbox"/> mm 無記號: 沒有 / NO Symbol Adjustable Stroke | | | | | |
| 12 | 近接開關 SENSOR SWITCH | 無記號: 無裝置(標準型) / B: 兩端近接開關 / X: 近接在前 / Y: 近接在後 / T: 近接*3 / U: 近接*4 N: No symbol / B: Double side sensor switch / X: Rod-cover side sensor switch / Y: Cap-cover side sensor switch / T: sensor switch*3 / U: sensor switch*4 | | | | | |

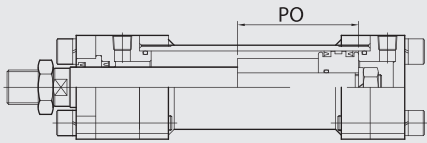


方型重油油壓缸採購指南
14Mpa Hydraulic Cylinders How to Order

[說明1] 長衝程活塞加長襯套尺寸與繫緊模式選用參考:



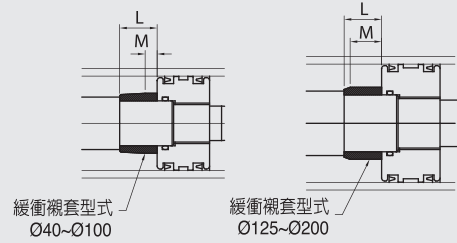
加中座模式(適用於缸徑 $\varnothing 40\sim\varnothing 100$,行程1500以上)



兩端加法蘭模式 (建議用於缸徑 $\varnothing 40\sim\varnothing 100$,行程2000mm以上)

| 缸徑 | PN | PO |
|-------------------|-----|-----|
| $\varnothing 40$ | 60 | 90 |
| $\varnothing 50$ | 70 | 100 |
| $\varnothing 63$ | 70 | 100 |
| $\varnothing 80$ | 100 | 150 |
| $\varnothing 100$ | 100 | 120 |

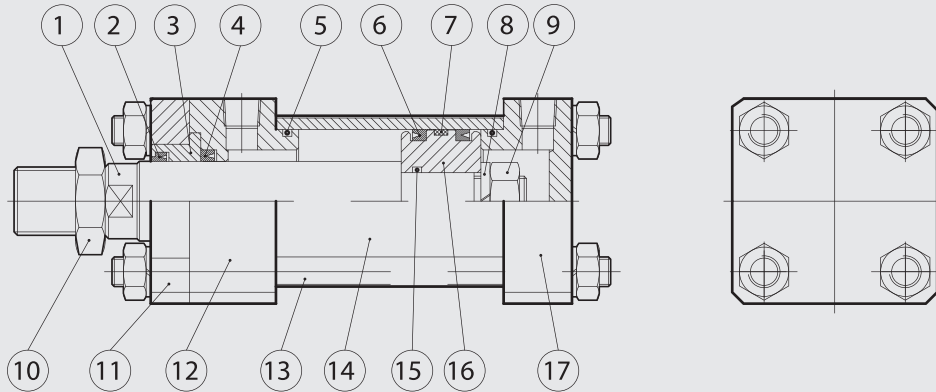
[說明2] 緩衝標準距離尺寸:



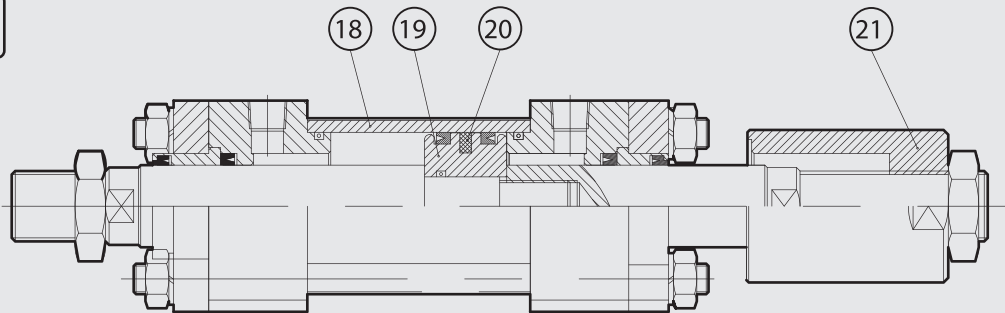
| 缸徑 | L長度 | M長度 |
|-------------------------------------|-----|-----|
| $\varnothing 40\sim\varnothing 63$ | 20 | 8 |
| $\varnothing 80\sim\varnothing 100$ | 25 | 8 |

方型重油油壓缸結構圖
14Mpa Hydraulic Cylinders Structure and Parts List

FOB



FODR

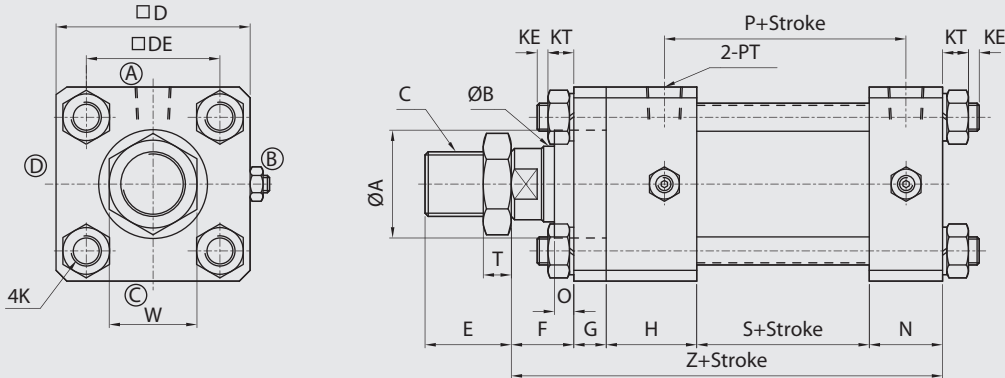


| NO | 零件名 Part name | 數量 Quantity | NO | 零件名 Part name | 數量 Quantity | NO | 零件名 Part name | 數量 Quantity |
|----|----------------------|-------------|----|--------------------|-------------|----|---------------------|-------------|
| 1 | 活塞桿 Piston rod | 1 | 8 | 彈簧華司 Spring washer | 1 | 15 | O型環 Gasket | 1 |
| 2 | 刮油環 Dust wiper | 1 | 9 | 螺帽 Nut | 1 | 16 | 活塞本體 Piston | 1 |
| 3 | 套銅 Rod bush | 1 | 10 | 軸心螺帽 Rod nut | 1 | 17 | 後蓋 End cover | 1 |
| 4 | 軸用油封 Rod packing | 1 | 11 | 銅壓板 End plate | 1 | 18 | 油缸本體 Cylinder tube | 1 |
| 5 | O型環 Gasket | 2 | 12 | 前蓋 Rod cover | 1 | 19 | 活塞本體 Piston | 1 |
| 6 | 橡膠活塞環 Piston packing | 2 | 13 | 固定柱子 Tie bolt | 4 | 20 | 磁石 Magnet | 1 |
| 7 | 耐磨環 Wearing ring | 1 | 14 | 油缸本體 Cylinder tube | 1 | 21 | 可調螺帽 Adjustable nut | 1 |

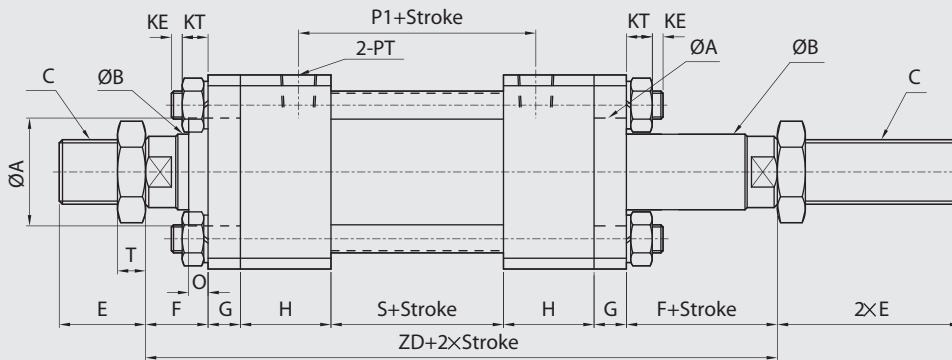
方型重油油壓缸尺寸圖

14Mpa Hydraulic Cylinders Dimensional Features

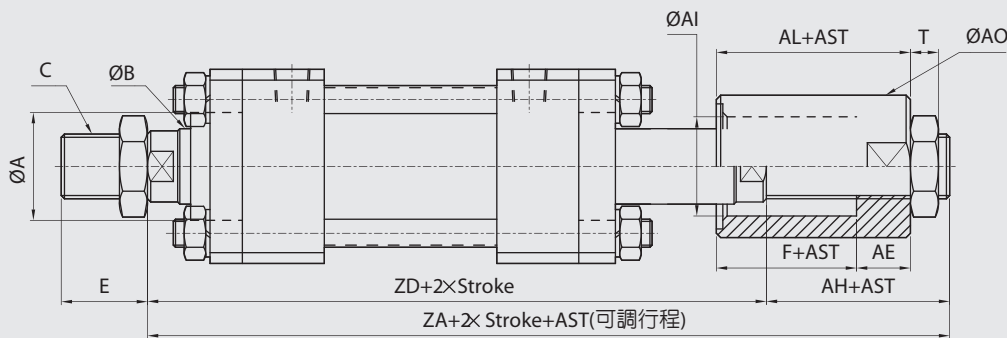
FOB FO+B(標準型) TYPE



FOD FO+D(雙軸型) TYPE



FOD FOD+AST(雙軸型附可調帽) TYPE



FOB-FOD TYPE

A(可調行程) TYPE

| BORE | SIZE | ØA | ØB | C | □D | □DE | E | F | G | H | O | N | P | P1 | PM | PT | K | KE | KT | S | T | W | Z | ZD | ZA | AH | AE | ØAI | ØAO | AL |
|------|------|----|----|----------|-----|-----|----|----|----|----|----|----|-----|-----|----|-----|-----------|----|----|----|----|----|-----|-----|-----|----|----|-----|-----|----|
| Ø40 | | 35 | 20 | M18XP1.5 | 65 | 45 | 30 | 25 | 11 | 36 | 11 | 26 | 88 | 90 | 40 | 1/4 | M10XP1.25 | 10 | 8 | 60 | 8 | 26 | 158 | 204 | 234 | 30 | 20 | 25 | 40 | 45 |
| Ø50 | | 40 | 25 | M22XP1.5 | 75 | 52 | 35 | 25 | 13 | 42 | 9 | 34 | 92 | 90 | 40 | 3/8 | M10XP1.25 | 10 | 8 | 60 | 13 | 32 | 174 | 220 | 255 | 35 | 20 | 28 | 45 | 45 |
| Ø63 | | 45 | 30 | M26XP1.5 | 90 | 63 | 40 | 30 | 15 | 42 | 9 | 34 | 97 | 95 | 45 | 3/8 | M12XP1.5 | 10 | 10 | 65 | 13 | 41 | 186 | 239 | 279 | 40 | 25 | 38 | 55 | 55 |
| Ø80 | | 55 | 40 | M36XP1.5 | 110 | 80 | 45 | 30 | 18 | 46 | 7 | 40 | 105 | 105 | 45 | 1/2 | M16XP1.5 | 10 | 13 | 65 | 15 | 50 | 199 | 253 | 298 | 45 | 30 | 48 | 65 | 60 |
| Ø100 | | 65 | 50 | M45XP2.0 | 135 | 102 | 50 | 40 | 20 | 50 | 7 | 40 | 114 | 114 | 50 | 1/2 | M18XP1.5 | 10 | 15 | 74 | 15 | 65 | 224 | 294 | 339 | 45 | 30 | 60 | 80 | 70 |

備註：

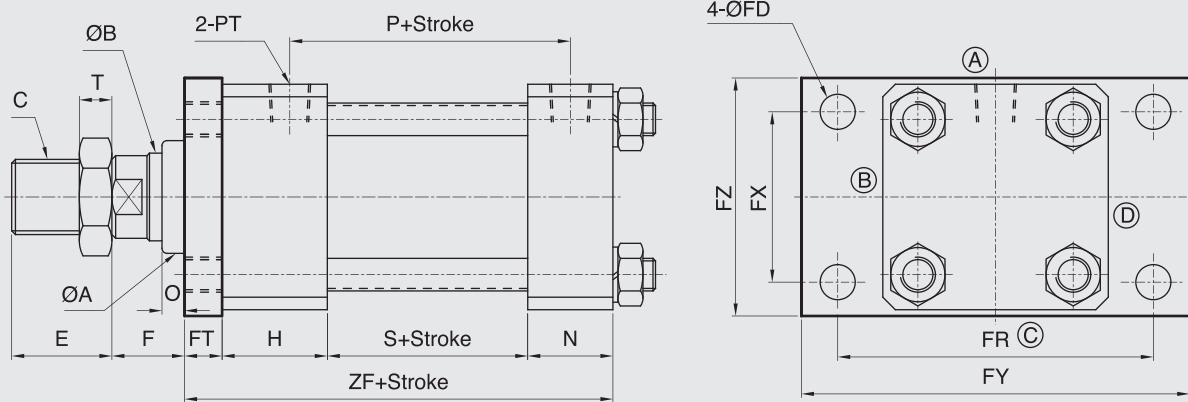
1. 本系列軸心加大或縮小時如未註明長度尺寸時, 依照本公司規定自行加工。
2. FO 系列行程未超過 1500mm 時, 活塞 (PM) 長度如附表, 訂製行程如超過 1500mm 時, 活塞長度請參閱特性資料表。
3. 本系列行程若超過 2000mm (含) 時, 須加拉桿中間固定座。
4. 本系列軸心螺帽規格 M50mm (含) 以上時, 其外徑為圓形。
5. AST 為客戶指定之可調行程。

1. The length and size of the axis were not specific when being enlarged or reduced. The size of the axis will be constructed according to the specification tablet.
2. When this series of stroke exceeds (includes) 1500mm, as see the property information for the length of the piston. Within 1500mm see the (PM) length of piston.
3. When this series of stroke exceeds (includes) 2000mm, the fixed base of the pull rod must be added in the middle.
4. The screw nut specification of this series of axis over M50 is round and W stands for its external diameter.
5. AST is the custom made adjustable stroke.

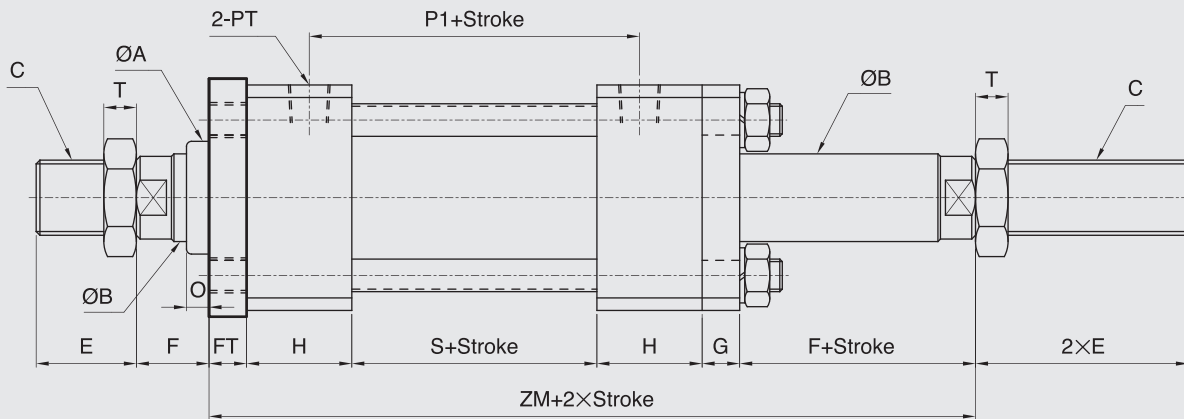
FO-FA Series

方型重油油壓缸FA板尺寸圖 14Mpa Hydraulic Cylinders FA Dimensional Features

FOB FOB+FA TYPE



FOD FOD+FA TYPE



FOB-FOD TYPE

FA TYPE

| BORE | SIZE | $\varnothing A$ | $\varnothing B$ | C | E | F | G | H | O | N | P | P1 | PM | PT | S | T | ZF | ZM | $\varnothing FD$ | FT | FR | FX | FY | FZ |
|-------------------|------|-----------------|-----------------|----|----|----|----|----|----|-----|-----|----|-----|----|----|-----|-----|----|------------------|-----|-----|-----|-----|----|
| $\varnothing 40$ | 35 | 20 | M18XP1.5 | 30 | 25 | 11 | 36 | 11 | 26 | 88 | 90 | 40 | 1/4 | 60 | 8 | 133 | 179 | 11 | 11 | 95 | 46 | 118 | 69 | |
| $\varnothing 50$ | 40 | 25 | M22XP1.5 | 35 | 25 | 13 | 42 | 9 | 34 | 92 | 90 | 40 | 3/8 | 60 | 13 | 149 | 195 | 11 | 13 | 115 | 58 | 145 | 85 | |
| $\varnothing 63$ | 45 | 30 | M26XP1.5 | 40 | 30 | 15 | 42 | 9 | 34 | 97 | 95 | 45 | 3/8 | 65 | 13 | 156 | 209 | 14 | 15 | 132 | 65 | 165 | 98 | |
| $\varnothing 80$ | 55 | 40 | M36XP1.5 | 45 | 30 | 18 | 46 | 7 | 40 | 105 | 105 | 45 | 1/2 | 65 | 15 | 169 | 223 | 18 | 18 | 155 | 87 | 190 | 118 | |
| $\varnothing 100$ | 65 | 50 | M45XP2.0 | 50 | 40 | 20 | 50 | 7 | 40 | 114 | 114 | 50 | 1/2 | 74 | 15 | 184 | 254 | 18 | 20 | 190 | 109 | 230 | 150 | |

備註:

1. 本系列軸心加大或縮小時如未註明長度尺寸時,依照本公司規定自行加工。
2. FO 系列行程未超過 1500mm時,活塞(PM)長度如附表,訂製行程如超過 1500mm時,活塞長度請參閱特性資料表。
3. 本系列軸心螺帽規格M50mm(含)以上時,其外徑為圓形。

1. The length and size of the axis were not specified when being enlarged or reduced.

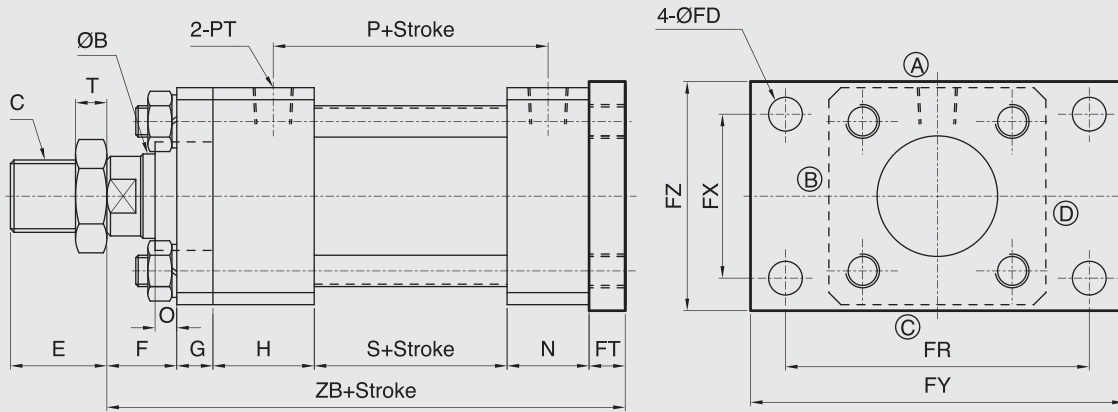
The size of the axis will be constructed according to the specification table.

2. When this series of stroke exceeds (includes) 1500mm, as see the property information for the length of the piston. Within 1500mm see the (PM) length of piston.

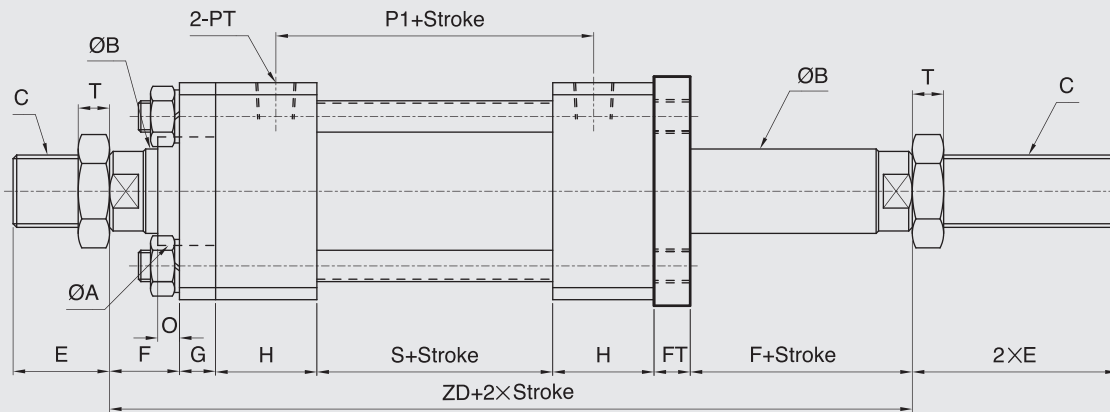
3. The screw nut specification of this series of axis over M50 is round and W stands for its external diameter.

方型重油油壓缸FB板尺寸圖
14Mpa Hydraulic Cylinders FB Dimensional Features

FOB FOB+FB TYPE



FOD FOD+FB TYPE



| FOB-FOD TYPE | | | | | | | | | | | | | | | | | FB TYPE | | | | | | | |
|--------------|-------------------|-----------------|-----------------|----------|----|----|----|----|----|----|-----|-----|----|-----|----|----|---------|-----|------------------|----|-----|-----|-----|-----|
| BORE | SIZE | $\varnothing A$ | $\varnothing B$ | C | E | F | G | H | O | N | P | P1 | PM | PT | S | T | ZB | ZD | $\varnothing FD$ | FT | FR | FX | FY | FZ |
| | $\varnothing 40$ | 35 | 20 | M18XP1.5 | 30 | 25 | 11 | 36 | 11 | 26 | 88 | 90 | 40 | 1/4 | 60 | 8 | 169 | 204 | 11 | 11 | 95 | 46 | 118 | 69 |
| | $\varnothing 50$ | 40 | 25 | M22XP1.5 | 35 | 25 | 13 | 42 | 9 | 34 | 92 | 90 | 40 | 3/8 | 60 | 13 | 187 | 220 | 11 | 13 | 115 | 58 | 145 | 85 |
| | $\varnothing 63$ | 45 | 30 | M26XP1.5 | 40 | 30 | 15 | 42 | 9 | 34 | 97 | 95 | 45 | 3/8 | 65 | 13 | 201 | 239 | 14 | 15 | 132 | 65 | 165 | 98 |
| | $\varnothing 80$ | 55 | 40 | M36XP1.5 | 45 | 30 | 18 | 46 | 7 | 40 | 105 | 105 | 45 | 1/2 | 65 | 15 | 217 | 253 | 18 | 18 | 155 | 87 | 190 | 118 |
| | $\varnothing 100$ | 65 | 50 | M45XP2.0 | 50 | 40 | 20 | 50 | 7 | 40 | 114 | 114 | 50 | 1/2 | 74 | 15 | 244 | 294 | 18 | 20 | 190 | 109 | 230 | 150 |

備註：

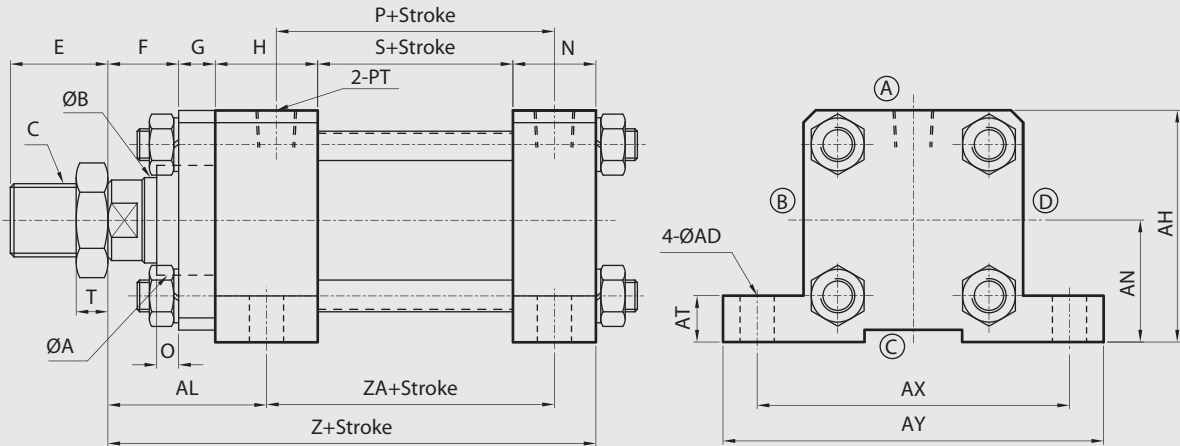
1. 本系列軸心加大或縮小時如未註明長度尺寸時, 依照本公司規定自行加工。
2. F0 行程未超過 1500mm時, 活塞(PM)長度如附表, 訂製行程如超過1500mm時, 活塞長度請參閱特性資料表。
3. 本系列軸心螺帽規格M50mm(含)以上時, 其外徑為圓形。

1. The length and size of the axis were not specificide when being enlarged or reduced. The size of the axis will be constructed according to the specification tablet.
2. When this series of stroke exceeds(includes) 1500mm, as see the property information for the length of the piston. Within 1500mm see the (PM) length of piston.
3. The screw nut specification of this series of axis over M50 is round and W stands for its external diameter.

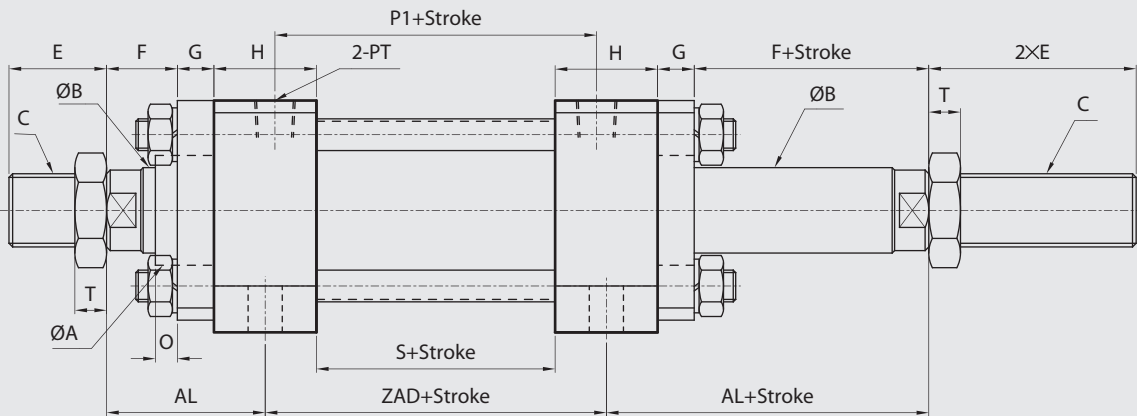
FO-LA Series

方型重油油壓缸LA尺寸圖 14Mpa Hydraulic Cylinders LA Dimensional Features

FOB FOB+LA TYPE



FOD FOD+LA TYPE



FOB-FOD TYPE

LA TYPE

| BORE | SIZE | ØA | ØB | C | E | F | G | H | O | N | AH | AL | AN | P | P1 | PM | PT | S | T | ZA | ZAD | Z | ØAD | AT | AX | AY |
|------|------|----|----|----------|----|----|----|----|----|----|-----|----|------|-----|-----|----|-----|----|----|-----|-----|-----|-----|----|-----|-----|
| Ø40 | | 35 | 20 | M18XP1.5 | 30 | 25 | 11 | 36 | 11 | 26 | 70 | 54 | 37.5 | 88 | 90 | 40 | 1/4 | 60 | 13 | 91 | 96 | 158 | 11 | 14 | 95 | 118 |
| Ø50 | | 40 | 25 | M22XP1.5 | 35 | 25 | 13 | 42 | 9 | 34 | 80 | 59 | 42.5 | 92 | 90 | 40 | 3/8 | 60 | 13 | 98 | 102 | 174 | 11 | 17 | 115 | 145 |
| Ø63 | | 45 | 30 | M26XP1.5 | 40 | 30 | 15 | 42 | 9 | 34 | 95 | 66 | 50 | 97 | 95 | 45 | 3/8 | 65 | 13 | 103 | 107 | 186 | 14 | 19 | 132 | 165 |
| Ø80 | | 55 | 40 | M36XP1.5 | 45 | 30 | 18 | 46 | 7 | 40 | 115 | 71 | 60 | 105 | 105 | 45 | 1/2 | 65 | 13 | 108 | 111 | 199 | 18 | 25 | 155 | 190 |
| Ø100 | | 65 | 50 | M45XP2.0 | 50 | 40 | 20 | 50 | 7 | 40 | 140 | 85 | 72.5 | 114 | 114 | 50 | 1/2 | 74 | 15 | 119 | 124 | 224 | 18 | 27 | 190 | 230 |

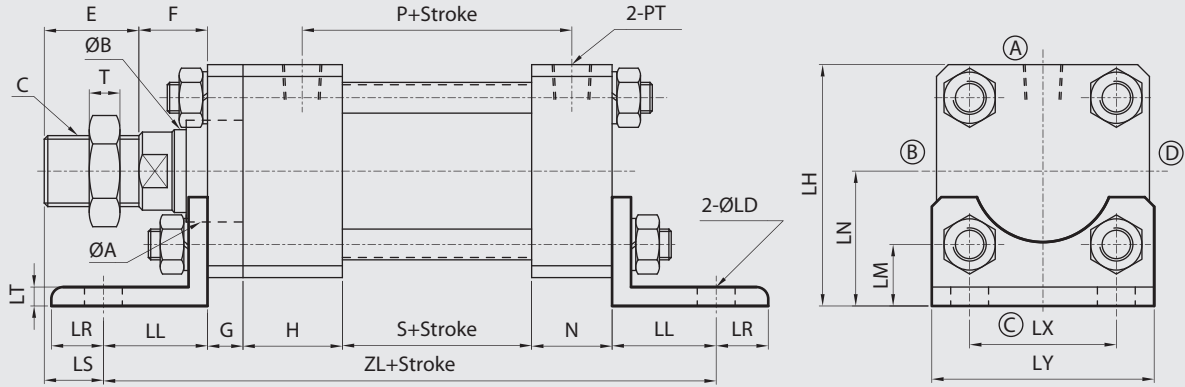
備註：

1. 本系列軸心加大或縮小時如未註明長度尺寸時, 依照本公司規定自行加工。
2. F0 系列行程未超過 1500mm 時, 活塞(PM)長度如附表, 訂製行程如超過 1500mm 時, 活塞長度請參閱特性資料表。
3. 本系列行程若超過 2000mm(含)時, 須加拉桿中間固定座。
4. 本系列軸心螺帽規格 M50mm(含)以上時, 其外徑為圓形。

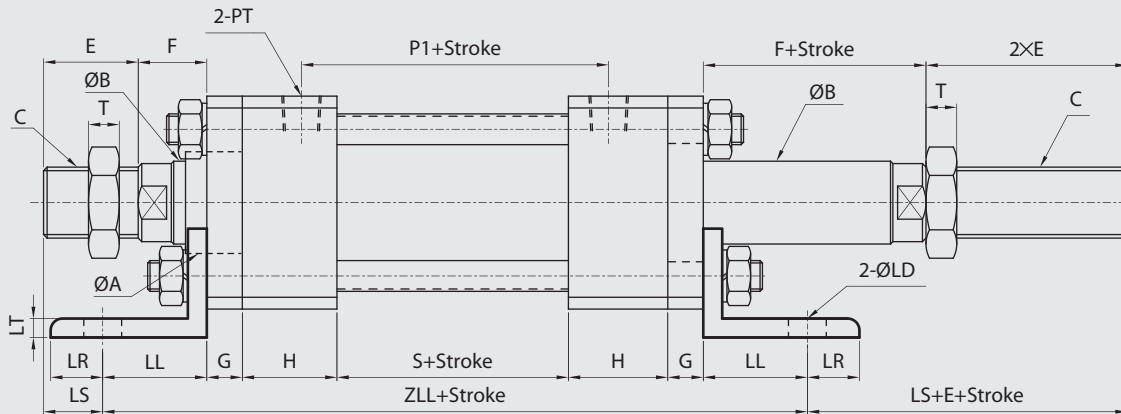
1. The length and size of the axis were not specific when being enlarged or reduced. The size of the axis will be constructed according to the specification tablet.
2. When this series of stroke exceeds (includes) 1500mm, as see the property information for the length of the piston. Within 1500mm see the (PM) length of piston.
3. When this series of stroke exceeds (includes) 2000mm, the fixed base of the pull rod must be added in the middle.
4. The screw nut specification of this series of axis over M50 is round and W stands for its external diameter.

方型重油油壓缸LB架尺寸圖
14Mpa Hydraulic Cylinders LB Dimensional Features

FOB FOB+LB (架) TYPE



FOD FOD+LB TYPE



| BORE | SIZE | FOB-FOD TYPE | | | | | | | | | | | | | | | | | LB TYPE | | | | | | | |
|------|------|--------------|----------|----|----|----|----|----|------|----|----|-----|-----|----|-----|----|----|-----|---------|-----|-----|------|----|----|----|-----|
| | | ØA | ØB | C | E | F | G | H | N | LH | LN | LS | P | P1 | PM | PT | S | T | ZL | ZLL | ØLD | LL | LM | LR | LT | LX |
| Ø40 | 35 | 20 | M18XP1.5 | 30 | 25 | 11 | 36 | 26 | 75.5 | 43 | 23 | 88 | 90 | 40 | 1/4 | 60 | 8 | 197 | 218 | 11 | 32 | 20.5 | 13 | 8 | 45 | 65 |
| Ø50 | 40 | 25 | M22XP1.5 | 35 | 25 | 13 | 42 | 34 | 87.5 | 50 | 25 | 92 | 90 | 40 | 3/8 | 60 | 13 | 219 | 240 | 11 | 35 | 24 | 15 | 8 | 50 | 75 |
| Ø63 | 45 | 30 | M26XP1.5 | 40 | 30 | 15 | 42 | 34 | 105 | 60 | 28 | 97 | 95 | 45 | 3/8 | 65 | 13 | 240 | 263 | 14 | 42 | 28.5 | 18 | 10 | 58 | 90 |
| Ø80 | 55 | 40 | M36XP1.5 | 45 | 30 | 18 | 46 | 40 | 127 | 72 | 25 | 105 | 105 | 45 | 1/2 | 65 | 15 | 269 | 293 | 18 | 50 | 32 | 20 | 12 | 78 | 110 |
| Ø100 | 65 | 50 | M45XP2.0 | 50 | 40 | 20 | 50 | 40 | 127 | 85 | 35 | 114 | 114 | 50 | 1/2 | 74 | 15 | 294 | 324 | 18 | 55 | 34 | 23 | 12 | 96 | 135 |

備註：

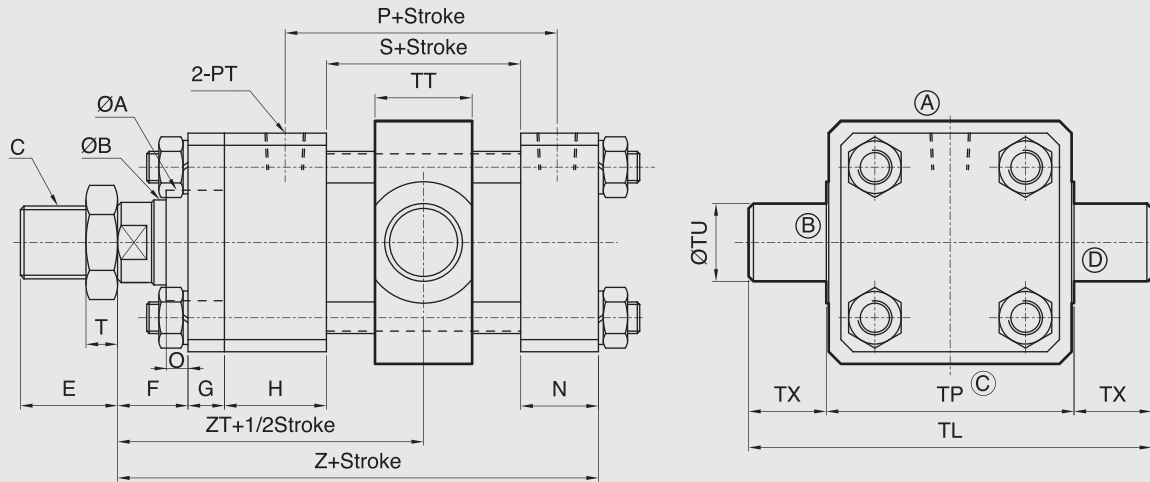
- 1.本系列軸心加大或縮小時如未註明長度尺寸時,依照本公司規定自行加工。
- 2.F0 系列行程未超過 1500mm時,活塞(PM)長度如附表,訂製行程如超過 1500mm時, 活塞長度請參閱特性資料表。
- 3.本系列行程若超過2000mm(含)時,須加拉桿中間固定座。
- 4.本系列軸心螺帽規格M50mm(含)以上時,其外徑為圓形。

- 1.The length and size of the axis were not specific when being enlarged or reduced. The size of the axis will be constructed according to the specification tablet.
- 2.When this series of stroke exceeds(includes) 1500mm, as see the property information for the length of the piston. Within 1500mm see the (PM) length of piston.
- 3.When this series of stroke exceeds(includes) 2000mm,the fixed base of the pull rod must be added in the middle.
- 4.The screw mut specification of this series of axis over M50 is round and W stands for its external diameter.

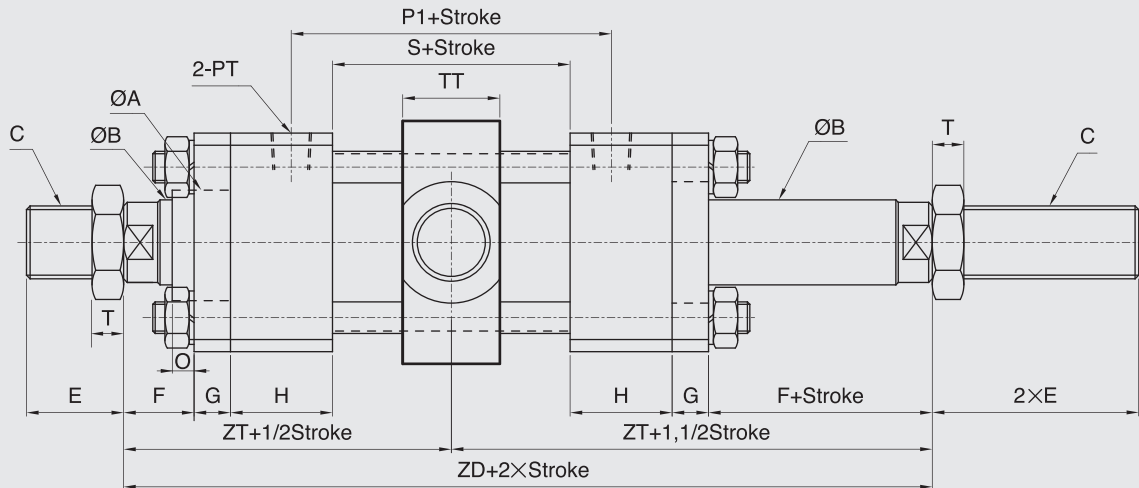
FO-TC Series

方型重油油壓缸TC尺寸圖 14Mpa Hydraulic Cylinders TC Dimensional Features

FOB FOB+TC TYPE



FOD FOD+TC TYPE



FOB-FOD TYPE

TC TYPE

| BORE | SIZE | ØA | ØB | C | E | F | G | H | O | N | P | P1 | PM | PT | S | T | Z | ZD | ZT | ØTU | TL | TP | TT | TX |
|------|------|----|----|----------|----|----|----|----|----|----|-----|-----|----|-----|----|----|-----|-----|-------|-----|-----|-----|----|----|
| Ø40 | | 35 | 20 | M18XP1.5 | 30 | 25 | 11 | 36 | 11 | 26 | 88 | 90 | 40 | 1/4 | 60 | 8 | 158 | 204 | 102 | 20 | 109 | 69 | 25 | 20 |
| Ø50 | | 40 | 25 | M22XP1.5 | 35 | 25 | 13 | 42 | 9 | 34 | 92 | 90 | 40 | 3/8 | 60 | 13 | 174 | 220 | 110 | 25 | 135 | 85 | 33 | 25 |
| Ø63 | | 45 | 30 | M26XP1.5 | 40 | 30 | 15 | 42 | 9 | 34 | 97 | 95 | 45 | 3/8 | 65 | 13 | 186 | 239 | 119.5 | 30 | 160 | 100 | 40 | 30 |
| Ø80 | | 55 | 40 | M36XP1.5 | 45 | 30 | 18 | 46 | 7 | 40 | 105 | 105 | 45 | 1/2 | 65 | 15 | 199 | 253 | 126.5 | 30 | 180 | 120 | 40 | 30 |
| Ø100 | | 65 | 50 | M45XP2.0 | 50 | 40 | 20 | 50 | 7 | 40 | 114 | 114 | 50 | 1/2 | 74 | 15 | 224 | 294 | 147 | 40 | 225 | 145 | 50 | 40 |

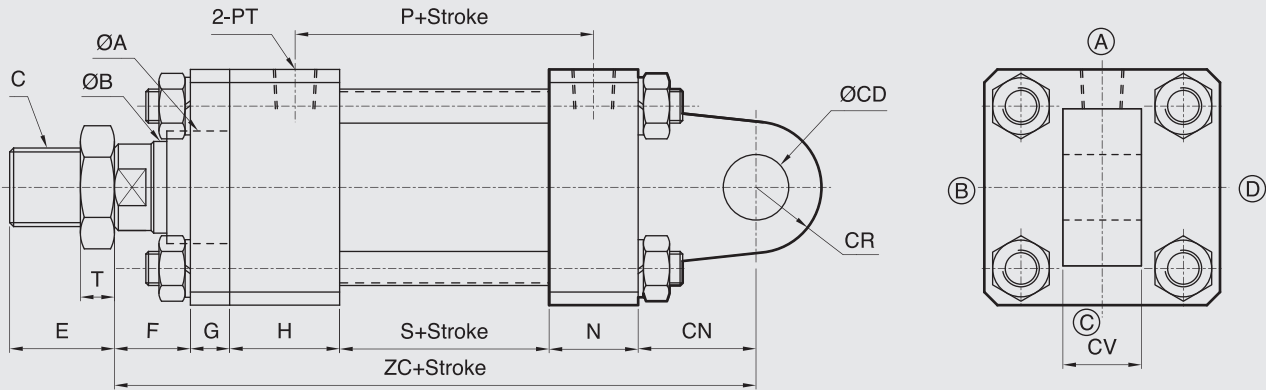
備註：

- 1.本系列軸心加大或縮小時如未註明長度尺寸時,依照本公司規定自行加工。
- 2.F0 行程未超過 1500mm時,活塞(PM)長度如附表,訂製行程如超過 1500mm時,活塞長度請參閱特性資料表。
- 3.本系列軸心螺帽規格M50mm(含)以上時,其外徑為圓形。

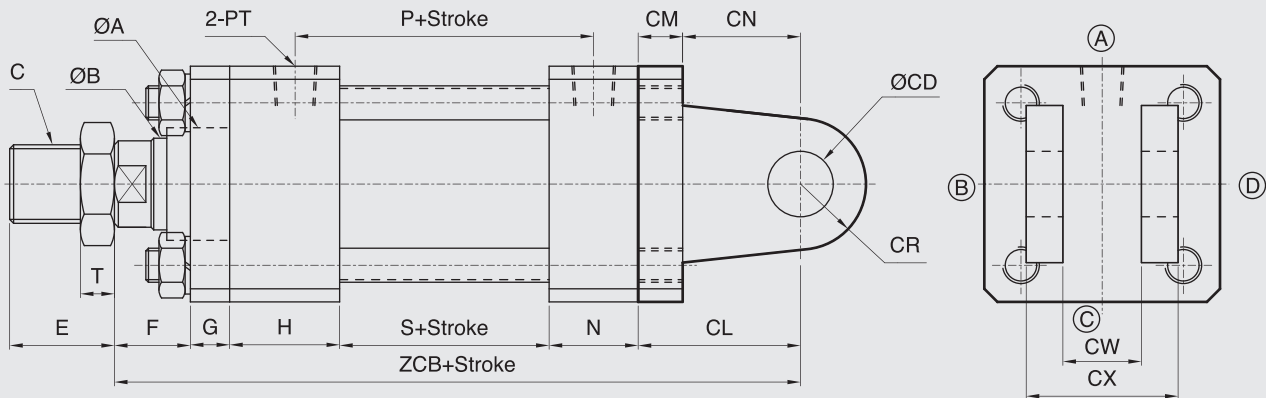
- 1.The length and size of the axis were not specificide when being enlarged or reduced. The size of the axis will be constructed according to the specification tablet.
- 2.When this series of stroke exceeds(includes) 1500mm, as see the property information for the length of the piston. Within 1500mm see the (PM) length of piston.
- 3.The screw mut specification of this series of axis over M50 is round and W stands for its external diameter.

方型重油油壓缸CA, CB尺寸圖 14Mpa Hydraulic Cylinders Dimensional Features

FOB FOB+CA TYPE



FOB FOB+CB TYPE



| FOB TYPE | | | | | | | | | | | | | | | CA-CB TYPE | | | | | | | | | | |
|----------|------|----|----|----------|----|----|----|----|----|----|-----|----|-----|----|------------|-----|-----|-----|----|----|----|----|----|----|----|
| BORE | SIZE | ØA | ØB | C | E | F | G | H | O | N | P | PM | PT | S | T | ZC | ZCB | ØCD | CL | CM | CN | CR | CV | CW | CX |
| | Ø40 | 35 | 20 | M18XP1.5 | 30 | 25 | 11 | 36 | 11 | 26 | 88 | 40 | 1/4 | 60 | 8 | 183 | 194 | 16 | 36 | 11 | 25 | 15 | 18 | 19 | 43 |
| | Ø50 | 40 | 25 | M22XP1.5 | 35 | 25 | 13 | 42 | 9 | 34 | 92 | 40 | 3/8 | 60 | 13 | 209 | 222 | 20 | 48 | 13 | 35 | 20 | 20 | 21 | 45 |
| | Ø63 | 45 | 30 | M26XP1.5 | 40 | 30 | 15 | 42 | 9 | 34 | 97 | 45 | 3/8 | 65 | 13 | 226 | 241 | 25 | 55 | 15 | 40 | 25 | 25 | 26 | 54 |
| | Ø80 | 55 | 40 | M36XP1.5 | 45 | 30 | 18 | 46 | 7 | 40 | 105 | 45 | 1/2 | 65 | 15 | 239 | 257 | 30 | 58 | 18 | 40 | 30 | 30 | 31 | 71 |
| | Ø100 | 65 | 50 | M45XP2.0 | 50 | 40 | 20 | 50 | 7 | 40 | 114 | 50 | 1/2 | 74 | 15 | 274 | 294 | 35 | 70 | 20 | 50 | 35 | 40 | 41 | 81 |

備註:

1. 本系列軸心加大或縮小時如未註明長度尺寸時, 依照本公司規定自行加工。
2. FO 行程未超過 1500mm 時, 活塞(PM)長度如附表, 訂製行程如超過1500mm 時, 活塞長度請參閱特性資料表。
3. 本系列CA型行程若超過2000mm(含)時, 須加拉桿中間固定座。
4. 本系列軸心螺帽規格M50mm(含)以上時, 其外徑為圓形。

1. The length and size of the axis were not specificide when being enlarged or reduced. The size of the axis will be constructed according to the specification table.
2. When this series of stroke exceeds(includes) 1500mm, as see the property information for the length of the piston. Within 1500mm see the (PM) length of piston.
3. When this series of stroke exceeds(includes) 2000mm, the fixed base of the pull rod must be added in the middle.
4. The screw nut specification of this series of axis over M50 is round and W stands for its external diameter.